

THE RAINBOW VOYAGE

TRAVEL DESIGNER IN SOUTH AFRICA TM

A piece of culture in a remarkable tour involving a great part of the South African culture, this in great landscapes.

Silver Tour

10 Days in South Africa

4/5 Stars Accommodation Standard



The Rainbow Voyage

120, Emerald Drive - Cape Town 7979 - SOUTH AFRICA

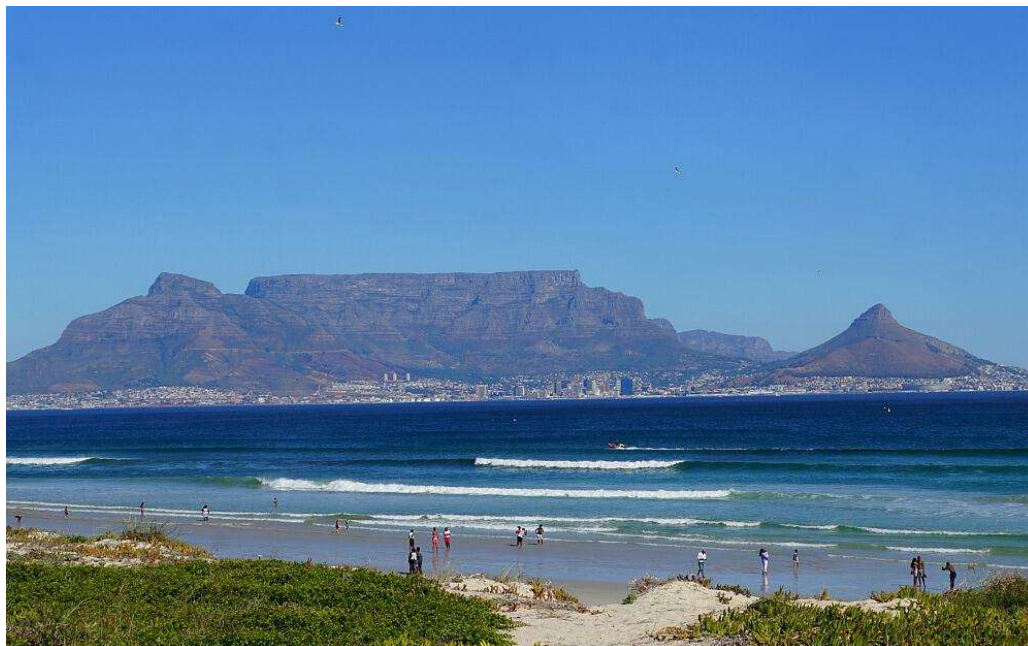
Tel: +27 81 345 6587

Email: info@rainbow-voyage.com

www.rainbow-voyage.com

Silver Tour: 10 days route – Cape Town to Johannesburg

PHASE 1: Cape Town area (4 days)



Day 1: Robben Island

Activities: Robben Island (can be replaced by Township Tour)

Included Meal(s): Breakfast

Accommodation: The Table Bay Hotel (5 stars) – Luxury Room

Day 2: Tour of Historic Cape Town

Activities: Guided tour within Historic part of the city + visit of Signal Hill

Included Meal(s): Breakfast

Accommodation: The Table Bay Hotel (5 stars) – Luxury Room

Day 3: Marine Eco Tour + Table Mountain

Activities: Marine Eco Tour + Table Mountain

Included Meal(s): Breakfast

Accommodation: The Table Bay Hotel (5 stars) – Luxury Room

Day 4: Peninsula

Activities: Visit of Maiden's Cove, Hout Bay Seal Island, Cape Point Nature Reserve Boulder's Beach, Groot Constantia Wine Estate

Included Meal(s): Breakfast

Accommodation: The Table Bay Hotel (5 stars) – Luxury Room

PHASE 2: Kwazulu Natal and Swaziland (3 days)



Day 5: Cape Town to DumaZulu Traditional Village (Hluhluwe)

Activities: Boat Trip on the lake Santa Lucia Estuary

Included Meal(s): Dinner - Breakfast

Accommodation: DumaZulu Lodge (4 stars) – Chalet

Day 6: DumaZulu Traditional Village to Milwane Wildlife Sanctuary (Swaziland)

Activities: 4X4 Morning Game Drive

Included Meal(s): Breakfast

Accommodation: Milwane Wildlife Sanctuary (3 Stars) - Rest Camp Hut

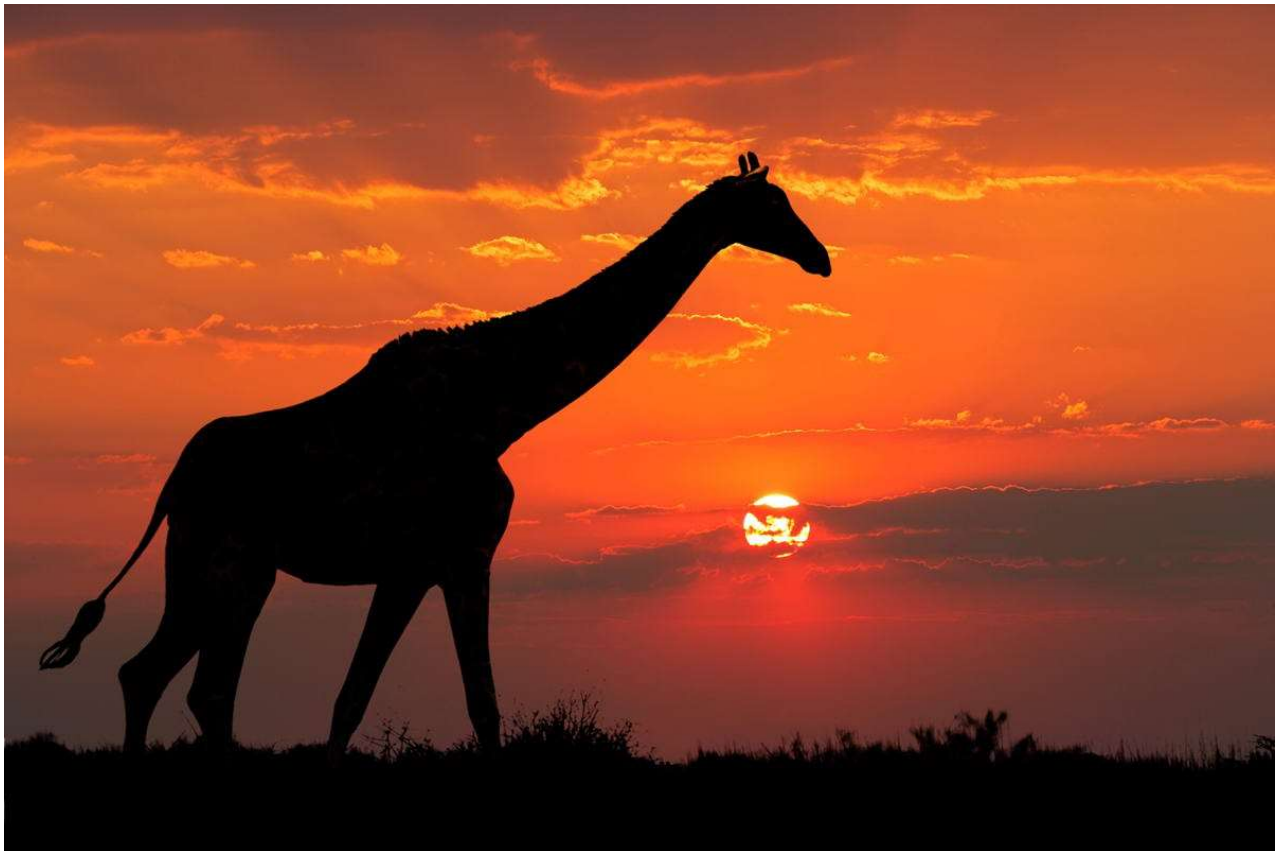
Day 7: Milwane Wildlife Sanctuary to Kruger Park

Activities: 4X4 Morning Game Drive

Included Meal(s): Dinner - Breakfast

Accommodation: Nut Grove Manor (4 Stars) - Cashew

PHASE 3: Kruger Park, Johannesburg (3 days)



Day 8: Kruger Park

Activities: Full day Safari

Included Meal(s): Dinner - Breakfast

Accommodation: Nut Grove Manor (4 Stars) - Cashew

Day 9: Kruger Park to Johannesburg

Activities: Blyde River Canyon and Potholes (Morning)

Included Meal(s): Breakfast

Accommodation: Fairlawns Boutique Hotel and Spa (5 Stars) – Grand Chapeau Suite

Day 10: Johannesburg

Activities: – Soweto (Morning) - Apartheid Museum (Afternoon)

DETAILED ITINERARY

During customers' stay in Cape Town area, we propose two options trip:

- One fully guided from their arrival at Cape Town until their departure from Cape Town.
- One in self-drive (as for the rest of the voyage).

Both options will be presented in our detailed itinerary shown here after.

For the rest of the voyage, the self-drive is proposed. Please contact us if you are interested in a complete fully guided journey.

1st option: Guided tour in Cape Town area

DAY 1

Morning	<p>Cape Town International Airport <i>Embark on your guided tour aboard your car: service starts at Cape Town airport and ends at Cape Town airport - 4 days</i> Depart from the Airport to The Table Bay Hotel along the N2. Rest – Early Lunch</p>
12h30 16h30	<p>Robben Island</p> <p><i>For nearly 400 years, Robben Island, 12 kilometers from Cape Town, was a place of banishment, exile, isolation and imprisonment. It was here at Robben Island that rulers sent those regarded as political troublemakers, social outcasts and the unwanted of society. These days, a trip to Robben Island, a UNESCO World Heritage Site, is a must-do on the itinerary of any tourist to Cape Town.</i></p> <p><i>The prisoners who worked at Robben Island Limestone Quarry over the centuries included Nelson Mandela. At his time, there was no need for the island's limestone. So prisoners had to break up the stone and to carry it to one end of the quarry one day and then back the next. Mandela and his fellow prisoners used their time in the quarry to educate themselves in everything from literature, philosophy, history and current events.</i></p> <p><i>The Island is also pretty fascinating from a geographical and environmental perspective. It is actually the peak of a mountain. The rest of the mountain just happens to be under water. Roughly 132 species of bird – including a colony of African Penguins – have made the island their home. Keep an eye out for Crowned Cormorants and Black Crowned Night Herons, which breed on the island in large colonies. During the journey, you can see Cape Fur Seals and Southern Right Whales. On the island itself, you'll find a variety of buck – including Springbok and Eland – and three different species of tortoises!</i></p>
OR	<p>Please note that a visit to Robben Island always depends on weather conditions. If the weather gets very bad, the ferries won't sail and tours are canceled. In such case we generally propose a visit to one of Cape Town's Townships (Khayelitsha, Vrygrond, Langa) together with a visit of the former residential area of District 6 where about 60.000 people have been forcibly removed in the 1970's by the Apartheid regime.</p>
Evening	<p>Return to Hotel – The Table Bay Hotel Rest – Dinner – Night</p>



DAY 2

08H15	Depart from Hotel to the Foreshore
08H30 Morning	<p>Beginning of the tour: Bartolomeu Diaz statue at the northern end of the Foreshore</p> <p>By car: Statues of Jan Van Riebeeck and Maria de la Queillerie; The Robert Falcon Scott memorial; Great War memorial; Wagenaar Water Reservoir The Castle of Good Hope; The City Hall; King Edward VII Statue and the War Memorial; The Grand Parade; The Customs House; Groote Kerk;</p> <p>Walking: Statue of "Onze Jan Hofmeyr"; The Old Slave Lodge; Jan Smuts Statue; St George's Cathedral; The Houses of Parliament; S.A. Library; Tuynhuys; The Great Synagogue; S.A. National Gallery; S.A. Museum; Cecil J. Rhodes statue; Sire George Grey Statue; Bertram House;</p>
11:30	<p>By Car: Mount Nelson Hotel; The Noon Gun; Signal Hill</p> <p><i>Up on Signal Hill at 12:00 exactly every day, a cannon is fired.</i></p> <p><i>The daily noon gun (cannon) is not only Cape Town's oldest living tradition, but the guns used (there are two of them, just in case one of them fails) are two of the oldest in the world still in daily use.</i></p> <p><i>The gun was fired for the first time in 1806. It was used as a signal (hence Signal Hill) to ships in Table Bay. These are the oldest guns in daily use in the world. The noon gun has been one constant in Cape Town's colourful and ever-changing history, with the tradition surviving colonial occupations, wars, and apartheid.</i></p> <p><i>Two guns are loaded daily (in case of a misfire – although that's rumoured to have only happened once in 200 years!) with 1.5kg of gunpowder. The cannoneer raises a flag, and tells the story of the gun and its history. Then, at precisely noon, the gun is fired. Customer to please ensure to protect his ears as the bang is very loud.</i></p>
13h00 14h30	Lunch
Afternoon	<p>Drive to Bo-Kaap</p> <p><i>Hidden in central Cape Town is the Bo-Kaap. It is a multicultural area, with brightly colored houses from the nineteenth and seventeenth century, Muslim saints shrines ("kramats") and many beautiful "Mosques" including the first established Muslim Mosque in South Africa.</i></p> <p><i>The earliest development in the Bo Kaap area was undertaken in the 1760s by a chap called Jan de Waal. Subsequently, the area became known as Waalendorp. It has also been known as the Malay Quarter, the Slamse Buurt, and Scotcheskloof. Translated from Afrikaans, Bo Kaap means 'Above the Cape'.</i></p> <p><i>The area is filled with history. A visit to the museum gives a good view of the past and of the architectural heritage.</i></p> <p>Walking: The Bo-Kaap; Greenmarket Square and Old Town House; Metropolitan Methodist Church and Lutheran Church; Koopmans De Wet House;</p>

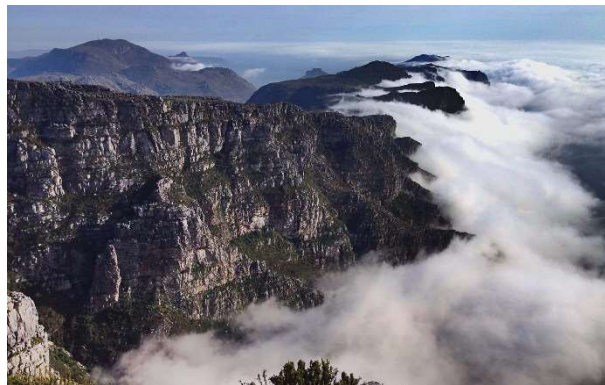
Afternoon	Shopping in Cape Town's pedestrian zone, St George Mall
Afternoon	Walking: Banks' buildings (FNB, Standard, Old Mutual). End at Old Company's Garden
18h30	Return to Hotel - The Table Bay Hotel – Night



DAY 3

09h00 13h30	<p>Table Bay Marine Eco-Tour</p> <p><i>Unique Sea life Experience!</i> <i>Discover the wonders of the Marine Life off our shores. Take a boat based Marine Eco Tour from the V&A Waterfront, focusing on the rich biodiversity found in our waters. Cape Town has numerous different species which include penguins, seals, dolphins, sunfish, whales and pelagic bird life that call this eco-system home. Great Views of Table Mountain, Robben Island and the Atlantic Seaboard.</i></p>
Afternoon	<p>Depart from the hotel to table Mountain Cable Car.</p> <p><i>Table Mountain is one of the oldest mountains in the world at 300 million years, making it 6 times older than Everest and 5 times older than the Rockies.</i></p> <p><i>In 2012, Table Mountain was inaugurated as one of the world's 'New7Wonders of Nature'. It is home to a rich bounty of fauna and flora, many species of which are endemic (exclusively native to a specific area) and survive only in the unique ecosystem contained on the slopes. An example of this is the Table Mountain Ghost Frog, an animal that cannot be found anywhere else in the world.</i></p>

	Since it's opening in 1929, almost 20 million people have taken the trip to the top of Table Mountain. The Table Mountain cableway has since become something of a landmark in Cape Town.
Evening	Night at The Table Bay Hotel



DAY 4

08H00	V&A Waterfront; Stadium; Mouille Point; Lighthouse; Sea Point, Bantry Bay, Clifton, Maiden's Cove
Morning	Camps Bay to Hout Bay <i>Points of Interest: Bakoven, Twelve Apostles, Table Mountain NP to Llandudno, Suikerbossie, Hout bay, Imizamo Yethu, Hout Bay Castle, Seal Island</i> Coffee break
Morning	Chapman's Peak Drive to Cape of Good Hope Nature Reserve <i>Points of Interest: Sentinel, Long Beach, Noordhoek, Cape Point Vineyards, Imhoff, Kommetjie, Slangkop Lighthouse, Shipwrecks along the coast, Scarborough</i>
Morning Afternoon	Cape of Good Hope Nature Reserve Cape of Good Hope, Cape Point – Lunch at Cape Point (Two Oceans Restaurant) (O)

	<p><i>You feel here at the edge of the world. This site is a World Heritage Site, and protected Nature Reserve is an area of vast natural beauty, world renown for its natural vegetation and rich bio-diversity.</i></p> <p><i>NB: The Cape of Good Hope is mistakenly thought of as the southernmost point of Africa and the spot where the Atlantic and Indian Oceans meet. The true southernmost point of Africa is at Cape Agulhas, located on the Garden Route of South Africa over 200 km away. The Cape of Good Hope is actually the most south-western tip of South Africa. Bartholomeu Dias, the Portuguese seafarer, was the first European to sail around the Cape in 1488. On his return voyage, he stopped at the south-western tip of South Africa, and named it Cabo Tormentoso, (Cape of Storms). King John of Portugal later gave it the name Cabo da Boa Esperança (Cape of Good Hope).</i></p>
Afternoon	Cape Point to Simon's Town via Boulders beach where we'll stop Stop at Simon's Town – Shopping – Coffee break
Afternoon	Simon's Town to Groot Constantia Wine Estate via Ou Kaapse Weg
Afternoon	<p>Groot Constantia Wine Estate</p> <p><i>Groot Constantia is the oldest wine estate in South Africa. It stands for excellence in the wine industry and is an ideal example for the preservation of the cultural and historical heritage of the country. Established in 1685 by first Governor of Cape of Good Hope Simon Van der Stel, the farm is still in full operation, a wide range of estate wines of quality are produced and a variety of other attractions are offered to make a visit to the estate an unforgettable experience.</i></p>
19h30	Return to the hotel - The Table Bay Hotel – Night

NB: Customer has the option to enjoy part of his trip in the Cape Peninsula in ebike (not included in our rates)



END OF GUIDED TOUR

2nd option: Self Drive in Cape Town area

All activities proposed in first option remain the same

DAY 1

Morning	Cape Town International Airport Pick up rented Europcar vehicle Category M (Drop off Cape Town Airport) Depart from the Airport to The Table Bay Hotel along the N2. Rest – Early Lunch
12h30 16h30	Robben Island
OR	Township Visit in case of bad weather conditions
Evening	Return to Hotel – The Table Bay Hotel Rest – Dinner – Night

DAY 2

	Free day in Cape Town - Please see our suggestion
Morning	Historical city center, Waterfront
	Lunch
Afternoon	Bo Kaap - Noon Gun - Signal Hill, Company's Garden
18h30	Return to Hotel - The Table Bay Hotel – Night

DAY 3

09h00 13h30	Table Bay Marine Eco-Tour
Afternoon	Table Mountain Cable Car.
Evening	Night at The Table Bay Hotel

DAY 4

08H00	V&A Waterfront; Stadium; Mouille Point; Lighthouse; Sea Point, Bantry Bay, Clifton, Maiden's Cove
-------	---------------------------------------------------------------------------------------------------

Morning	Camp's Bay to Cape Town Nature reserve via Hout Bay and Chapman's Peak
Morning Afternoon	Cape of Good Hope Nature Reserve Cape of Good Hope, Cape Point – Lunch at Cape Point (Two Oceans Restaurant) (O)
Afternoon	Cape Point to Simon's Town via Boulders beach where we'll stop Stop at Simon's Town – Shopping – Coffee break
Afternoon	Simon's Town to Groot Constantia Wine Estate via Ou Kaapse Weg
Afternoon	Groot Constantia Wine Estate
19h30	Return to the hotel - The Table Bay Hotel – Night

NB: Customer has the option to enjoy part of his trip in the Cape Peninsula in ebike (not included in our rates)

END OF STAY IN CAPE TOWN AREA

DAY 5

04h30	Route to Cape Town Airport
Morning	Domestic flight to Durban – Arrival at Durban at 08h05 – Pick up rented Europcar vehicle Category M (Drop off Johannesburg)
Morning	Route to Hluhluwe Lunch at Dumazulu Traditional Village
Afternoon	<p>Boat cruise on the Lake Saint Lucia Estuary</p> <p><i>The St Lucia Wetlands Park - now known as the iSimangaliso Wetland Park - was declared South Africa's first Natural World Heritage Site on 1 December 1999.</i></p> <p><i>The St Lucia Estuary is one of the largest in Africa and this amazing mass of water is home to approximately 800 hippos and over 1 000 Nile crocodiles. Wildlife such as antelope and zebra graze its shores and birdlife is prolific with over 500 resident species including large flocks of pelicans, flamingos and ducks. Marvel at the mangrove swamps and the numerous colourful butterflies that drink on the nectar of fynbos flowers as you take a leisurely cruise along this unique estuary.</i></p> <p><i>The St Lucia Wetlands Park offers a wide range of activities. Fishing, boating and bird-watching, scuba-diving, hiking and camping are all on offer and the region offers marvellous photographic opportunities to the amateur and professional photographer alike.</i></p>
Evening	Route to Dumazulu Traditional Village Dinner and Night



DAY 6

Early Morning	Route to Hluhluwe Game Reserve
Morning	<p>Three-hour 4x4 game drive in the Hluhluwe Game Reserve (o)</p> <p><i>Formerly known as the Hluhluwe Umfolozi Game Reserve now the Hluhluwe-Imfolozi Park. The park is the oldest proclaimed reserve in Africa (1895).</i></p> <p><i>The Park became world renowned for its white rhino conservation. Other areas of focus for which Hluhluwe-iMfolozi Park is famous include wilderness trails which originated in Umfolozi in the 1950s and its renowned Game Capture unit upgraded into the Centenary Capture Centre, a benchmark for animal capture and sustainable utilization throughout Africa. The Park covers some 96 000 hectares and contains an immense diversity of fauna and flora.</i></p>
Morning	Route to Milwane Rest Camp
	Lunch at Mogi Boutique Hotel
Afternoon	<p>Milwane Wildlife Sanctuary (o)</p> <p><i>Milwane is Swaziland's best-known nature reserve. It was here in 1961 that Ted Reilly – whose father had settled at the property in 1906 – first took action to save what remained of the kingdom's wildlife, converting it into a sanctuary and rounding up animals from elsewhere around the country before they were hunted out.</i></p> <p><i>Visitor can chose between guided walks, safaris or biking walks.</i></p>
Evening	Reilly's Rock Hilltop Lodge – Dinner and night



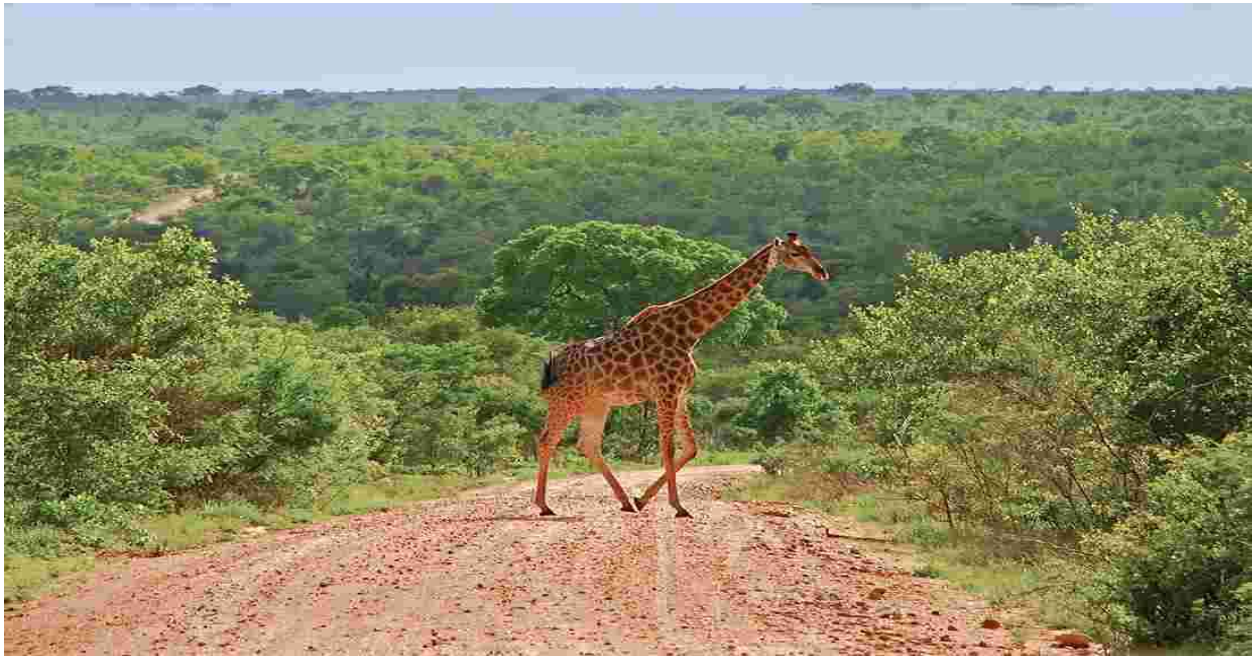
DAY 7

Morning	<p>Route to Malolotja National Park (o)</p> <p><i>Malolotja is one of the very best highland reserves in southern Africa, its 18,000ha wilderness of high rolling hills and deep forested river gorges offering a genuine wilderness in which hikers can lose themselves for days. The Malolotja river rises in the reserve, plunging over the 95m Malolotja Falls on its way to the Nkomati river, which cuts east towards the Indian Ocean. The rocks beneath Malolotja are among the oldest in the world – some, known as the Swaziland Supergroup, having being laid down as ocean sediment over 3.5 billion years ago, before metamorphosing under heat and pressure into the shales and quartzites we see today.</i></p> <p><i>Plenty of short walks are proposed to the visitor (o)</i></p>
	<p>Route to Piggs Peak Hotel and Casino – Lunch (o)</p>
Afternoon	<p>Route to 'Nut Grove Manor' (Kruger Park)</p>
Evening	<p>Dinner and night at 'Nut Grove Manor'</p>



DAY 8

	Full day Safari – Kruger Park
Evening	'Nut Grove Manor' – rest and dinner. Night



DAY 9

Morning	Route to Blyde River Canyon
Morning	<p>Blyde River Canyon) (o)</p> <p><i>The Blyde River Canyon, the third largest canyon in the world, is a significant natural feature forming the northern part of the Drakensberg escarpment. Located in the Blyde River Canyon Nature Reserve, it is 25 kilometres in length and is, on average, around 750 metres deep. The fresh mountain scenery and panoramic views over the Klein Drakensberg escarpment are quite spectacular and give the area its name of 'Panorama Route'. Viewpoints are named for the spectacle they offer, and God's Window and Wonder View hint at the magnitude of the scenery.</i></p>
Morning	Route to Bourke's Luck Potholes
Morning	<p>Bourke's Luck Potholes) (o)</p> <p><i>Where the Blyde River ("river of joy") and the Treur River ("river of sorrow") meet, water erosion has formed one of South Africa's most remarkable geological phenomena known as Bourke's Luck Potholes. Their formation is a natural phenomenon created by the swirling river water. They are found at the source of the Blyde River canyon.</i></p>
	Lunch at 'Potluck Boskombuis restaurant') (o)

Afternoon	Route to Johannesburg
Evening	Dinner and night at Fairlawns Boutique Hotel and Spa at Johannesburg



DAY 10

Morning	<p>Visit of Soweto (o)</p> <p>Lunch</p>
	Route to Apartheid Museum
Afternoon	<p>Visit of Apartheid Museum (o)</p> <p><i>The Apartheid Museum tells the story of the triumph of the human spirit over adversity.</i></p> <p><i>A visit to this museum is essential to have a deeper understanding and appreciation of this country, its darkest days and its brightest triumphs.</i></p> <p><i>The Apartheid Museum, the first of its kind, illustrates the rise and fall of apartheid: The racially prejudiced system that blighted much of its progress and the triumph of reason which crowned half a century of struggle. The Museum has been assembled and organized by a multi-disciplinary team of curators, film-makers, historians and designers.</i></p>
Afternoon	Return to the hotel for picking up luggage
Afternoon	Route to O.R.Tambo International Airport



(0) – Not included in our rates

END OF OUR SERVICES

RATES

Included in our rates:

- 9 night accommodation, 9 breakfasts and 2 dinners
- Luggage portorage (except for self-catering accommodation and camp site)
- All activities where there is no (o) symbol.
- Guide and transport in Cape Town area – **Only for 1st Option**
- Domestic flight from Cape Town to Durban (Economy Class)
- Car rental:

For the second part of the journey - **1st Option**

For the whole journey – **2nd Option**

- Local taxes as VAT or bed Levy are included at the rate applicable at the time the costing is done and can change without notice. In case of a change in the amount or percentage of tax applicable, this change will be immediately reflected in our rates in accordance with new tax regulations.

Excluded from our rates:

- International flights
- Tips and personal expenses
- Entrance fees for parks or game reserves (except where specifically indicated).
- Rates do not include cancellation, luggage, medical assistance and repatriation insurances.
- For annual rates, and unless otherwise indicated, the rates are not valid for Christmas, New Year, Chinese New Year or any major event in each of the countries visited.

IMPORTANT NOTES:

The tour described above is catering for an average 4/5 stars accommodation standard, as indicated on the first page. Please contact us for prices fitting precisely your customers' budget, whether lower or higher.

The category shown is not necessarily the official star grading of the hotel as some hotels have no grading. It reflects our opinion on the hotel category according to local standards.

Distances indicated in the itinerary if any are only given as an indication. The photographs displayed in the itinerary serve as general illustration of the destination and providers only and do not constitute a contractually binding description of specific services.

COMPANY'S CONDITIONS

General conditions

- Unless "Booking Confirmed" appears in the heading of the programme, the quotation is subject to the availability of hotels (and flights when applicable) upon your confirmation.
- Check In – Check Out: the standard check in time is from 14h00, and check out time is before 11h00.
- Game reserves: for game reserves offering a fully inclusive package, check in is before lunch and check out is after breakfast. Fully inclusive packages include 3 meals per day and 2 activities. Our programmes indicate Lunch, Dinner and Breakfast.

South Africa

VISAS, TAXES and FEES

When travelling on a self-drive:

- Rates do not include the entrance fees for private game reserves or game parks. These are to be settled by the guests directly at the entrance gate or at the lodge.
- In Swaziland: it is necessary to complete formalities on both sides of the border and a road tax of 85 ZAR (subject to change) is payable for non-Swaziland registered vehicles.
- An international driver's licence is compulsory. Please plan for this accordingly to obtain it in your country of residence prior to travelling.

Formalities for children

All minors under 18 years of age travelling to and from South Africa have to present additional documents. These new regulations apply to all travelers, regardless of the nationality. It is important to carefully check the different requirements as otherwise entering or leaving South Africa will be refused.

For further information, please contact the South African embassy / consulate in your country.

Vaccination

- Malaria prophylaxis is recommended for the Kruger Park, Swaziland and Durban regions.
- Except transit less than 12 hours at the airport only, yellow fever vaccination obligatory if arriving from a country with yellow fever (Ivory Coast, Senegal, Kenya, Ethiopia, Rwanda, Tanzania, etc.), complete list of countries with presence of yellow fever on www.who.int. Vaccination international notebook required to be presented upon arrival.

Kruger Park

There is a maximum threshold of visitors that can enter the park daily. If this threshold is reached, only visitors with pre-booked overnight accommodation will be permitted access. You are advised to get to your gate of choice as early as possible, particularly over peak season periods.

- The park gates open and close at sunrise and sunset, between 05h30 and 06h00, and 17h30-18h00, depending on the season.
- Traffic in the park is prohibited after closing time. If you sleep in the park, please take into account the travel time (average speed 40-50km/h) between the gate and the camp in which you stay overnight to get there before the park closes.

Tips

It is customary in the country to leave tips to service professionals, which includes in particular servers in restaurants (minimum 10% of the bill), porters in hotels (15 ZAR/piece of luggage/trip) and of course the guides, drivers or rangers you will meet during the trip (40 ZAR/day/person for the guide or driver-guide, 20 ZAR/day/person for the driver, 30 ZAR/day/person for the rangers).

None of these tips are mandatory, and the amounts shown here are only an indication of what is normally expected by the country's professionals.

Cancellation

Cancellation if any will result in the invoicing of cancellation fees according to the following schedule:

25% 30 Days before beginning of Service

75% 14 Days before beginning of Service

100% 1 Day before beginning of Service

Special Conditions

Europcar SA - Classic Plus Category M Early Booker:

SALES CONDITIONS EUROPCAR
CLASSIC PLUS COVER 2018/19

Rates include:

- Theft and Collision Damage Waiver (CWD and TW)
- Personal Accident Insurance (PAI)
- Unlimited Mileage
- Airport Surcharge
- Tourism Levy
- Value Added Tax at 15 %
- Carbon Emissions Tax
- All Additional driver per rental
- Assessor's Fee
- Windscreen
- Water and under-carriage damage to vehicles
- Tyre and rim damage, hubcaps
- Damage due to sandblasting
- GPS Unit

Rates exclude (To be billed directly to the renter):

- Fuel
- E-tolling Fees
- Young driver surcharge (R360.00 per day, per driver*)
- Optional equipment (i.e. baby seats – R500.00* per rental per seat)
- One way drop-off charges (Fees available on request)
- Delivery and collection fees (Fees available on request)
- Cross border charges (Fees available on request)
- Contract fee (R99.00*)

- Traffic Fine Handling Fee (R310.00*)
- Claim Handling fee (R975.00*), applicable to damage excluded from waivers
- No show fee: 1 day rental (extension rates)
- Additional Spare wheel (Group W only) (R1500 .00 per tyre)

Guide

One Way fees

One way between RO Tambo International and Sandton: R210.00*

One way between OR Tambo International and Lanseria Airport: R210.00*

One way between George, Plettenberg Bay and/or Knysna: R340.00*

International

South African and Botswana: R2500.00*

South African and Lesotho: R1600.00*

South African and Namibia: R7500.00*

South African and Swaziland: R1600.00*

Delivery and Collection South Africa & Namibia

During office hours

Within 25 km radius - per delivery and/or collection: R500.00*

Over 25 km radius – additional charge of R20.00* per kilometre

After hours (between 17:00 and 08:00 weekdays, on weekends and public holidays)

Within 25 km radius - per delivery and/or collection: R800.00*

Over 25 km radius – additional charge of R20.00* per kilometer

Cross border charges

Non-refundable amounts

Botswana: R1250.00*

Swaziland: R1250.00*

Lesotho: R1250.00*

Mozambique: R3000.00*

Zambia: R3000.00*

Zimbabwe: R3000.00*

* All amounts given as guide only and subject to change without notice.